

HERNANDEZ PORTICO

47188 CRUCILLO CT.
 FREMONT, CA 94539

CONSULTANTS

ARCHITECT:
 EDWIN BRUCE ASSOCIATES ARCHITECTS
 TEL: 408.995.5701
 1625 THE ALAMEDA, SUITE 610, SAN JOSE, CA 95126

PROJECT SCOPE

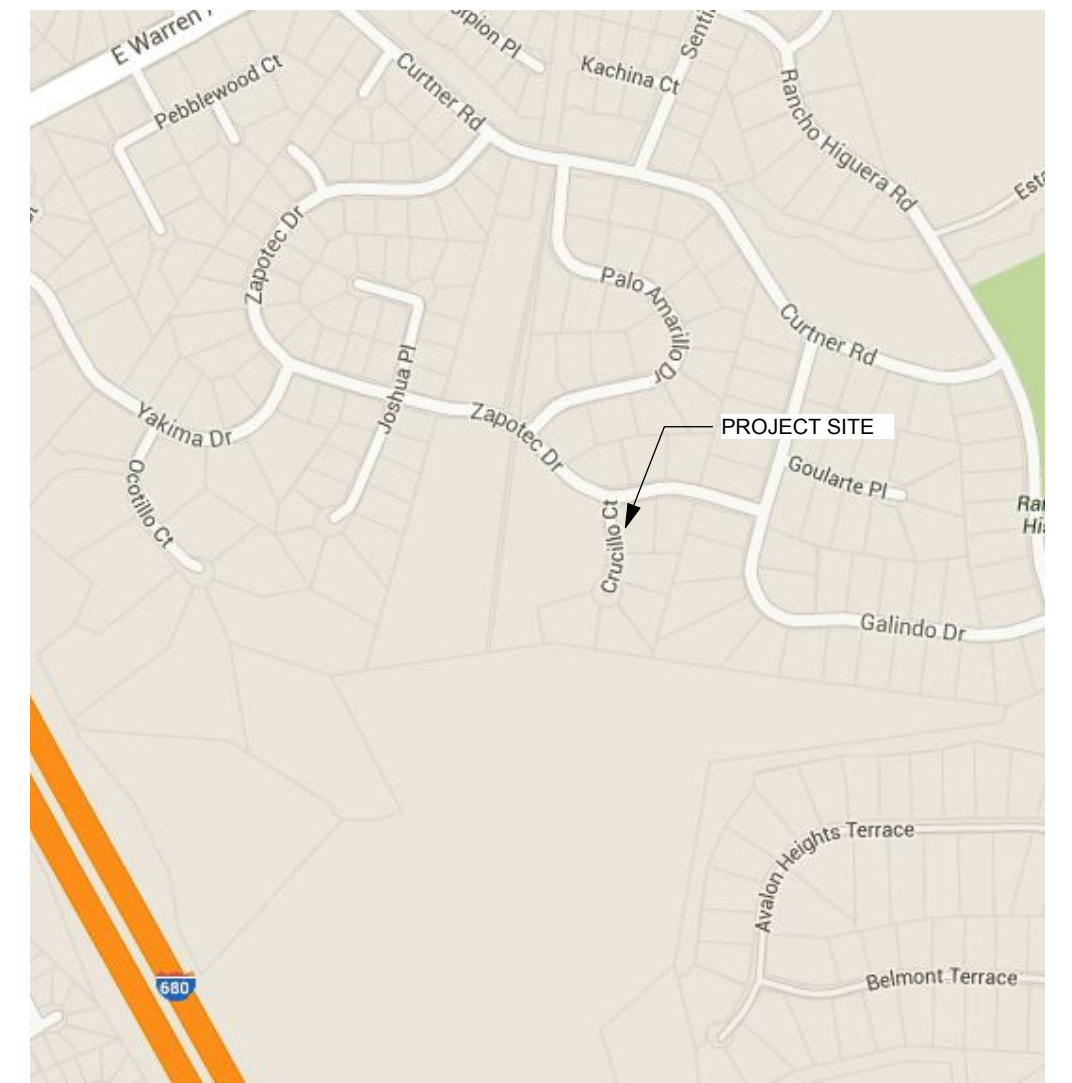
BUILD A PORTICO FOR THE MAIN ENTRANCE OF THE HOUSE TO PROTECT FROM WEATHER. REPLACE THE EXISTING DRIVEWAY WITH A NEW PAVING PATTERN. REPLACE EXISTING CONCRETE STAIRS WITH NEW CONCRETE STAIRS AND ADD TWO MORE STAIRS FOR SAFETY, ADD A FIVE FOOT LANDING BEFORE THE DECK.

PROJECT INFORMATION

PROJECT NAME: HERNANDEZ PORTICO
ADDRESS: 47188 CRUCILLO CT., FREMONT, CA 94539
APN: 519-1666-36
ZONING: R-1-20
OCCUPANCY GROUP: R-3
CODES: 2010 CALIF. BUILDING CODE, 2010 PLUMBING CODE, 2010 MECHANICAL CODE, 2010 ELEC. CODE, THE 2010 IBC, 2010 UMC, 2010 UPC, 2010 NEC AS AMENDED BY THE STATE OF CALIFORNIA AND THE CITY OF FREMONT ARE APPLICABLE TO THIS PROJECT.

DRAWING INDEX

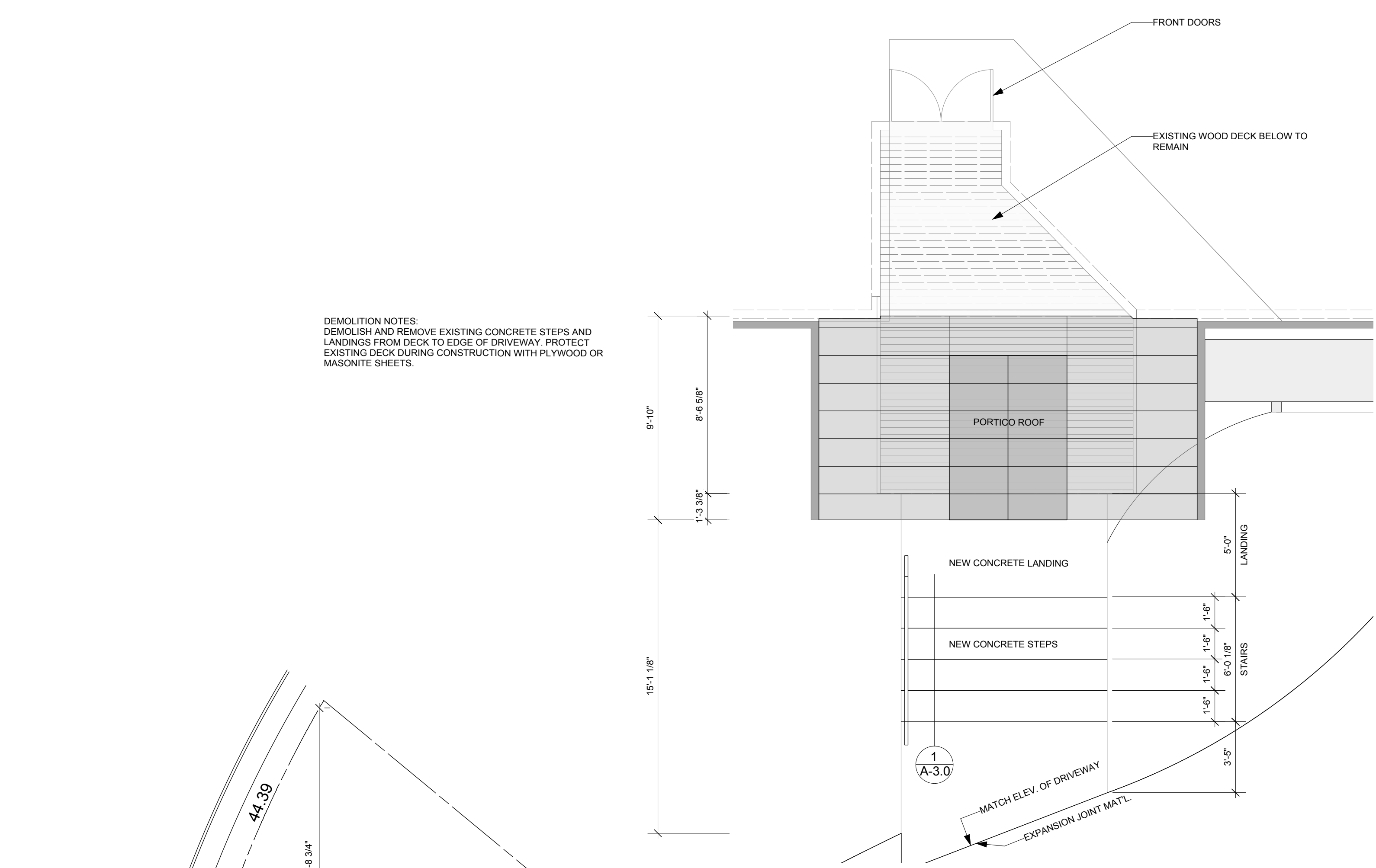
- A-1.0 SITE PLAN, LOCATION MAP, AERIAL VIEW, PROJECT INFORMATION, AND PROJECT SCOPE
- A-2.0 PLAN, SECTION, AND DETAILS
- A-3.0 ELEVATIONS AND STAIR DETAIL



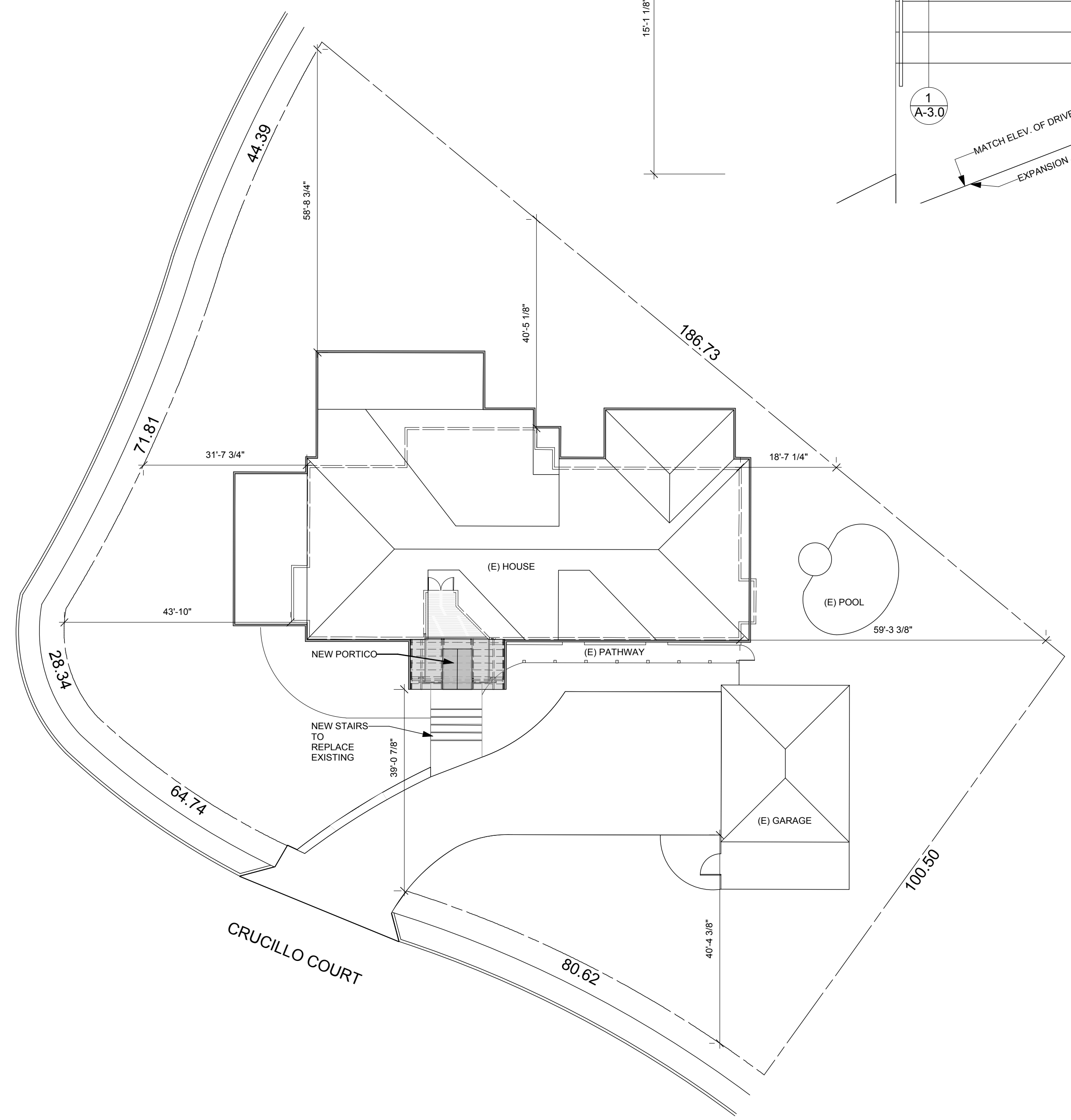
2 LOCATION MAP
 SCALE = N.T.S.



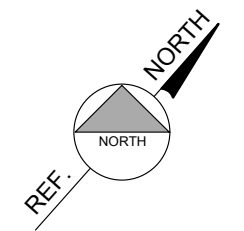
3 AERIAL VIEW
 SCALE = N.T.S.



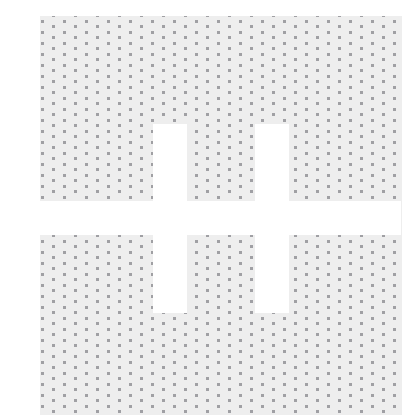
ROOF PLAN
 SCALE: 1/4" = 1'-0"



SITE PLAN
 1/16" = 1'-0"



Edwin Bruce Associates
 ARCHITECTS A I A
 1625 The Alameda Suite 610 San Jose California 95126
 T: 408.995.5701 F: 408.995.5022 website: www.edwinbruce.com



HERNANDEZ PORTICO
 47188 CRUCILLO CT. FREMONT, CA 94539

DATE	8.30.13
DRAWN	JO/IP
JOB NO	1309